

March 25, 1941.

A. LAINE

2,235,933

SKILL GAME

Filed Sept. 25, 1939

Fig. 1.

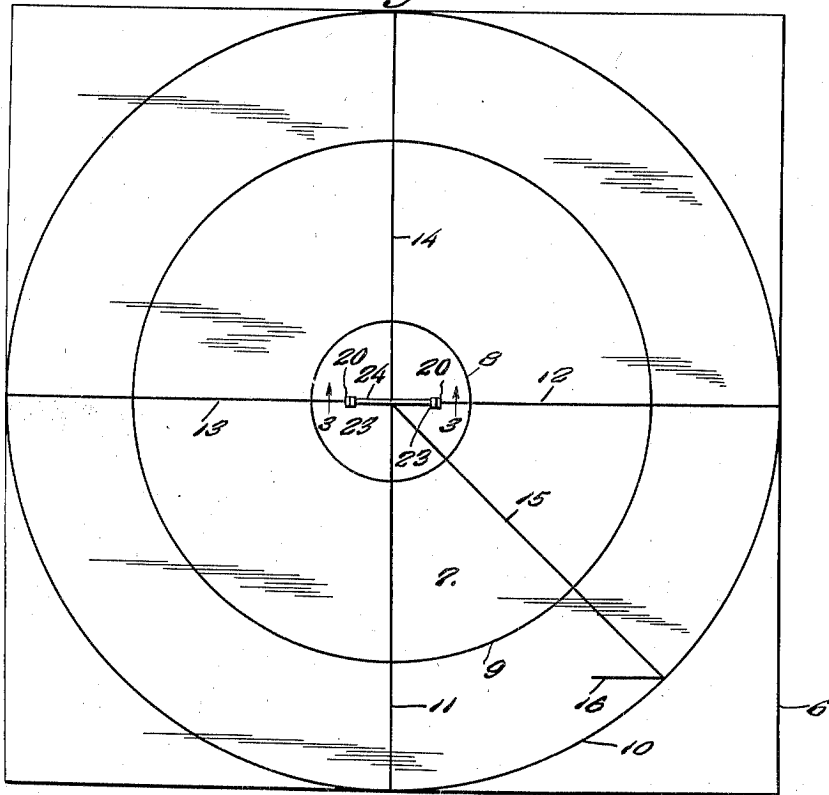


Fig. 2.

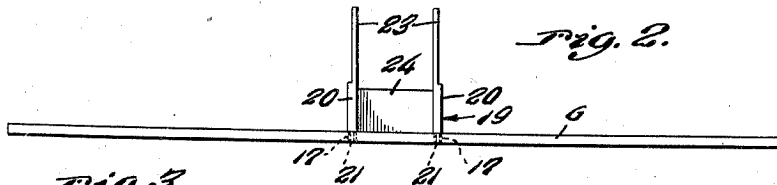


Fig. 3.

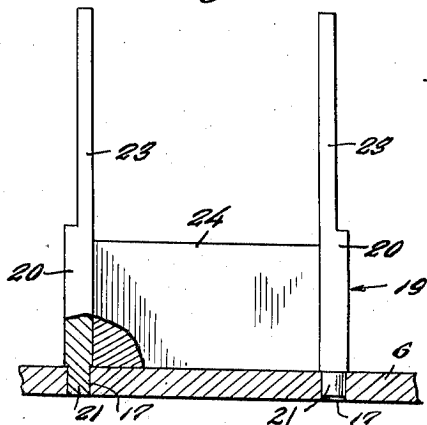
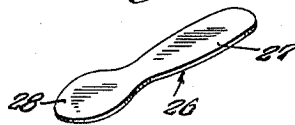


Fig. 4.



Fig. 5.



Inventor

Aarne Laine

By

Clarence A. O'Brien

Attorney

UNITED STATES PATENT OFFICE

2,235,933

SKILL GAME

Aarne Laine, New York, N. Y.

Application September 25, 1939, Serial No. 296,455

1 Claim. (Cl. 273—102)

The present invention relates to improvements in games particularly of the type wherein skill on the part of the participants is required when playing the game, and has for its primary object to provide a device of this character wherein each of the players may match his skill against the others to produce a pleasant competitive skill game.

Other objects of the invention are to provide a game which will be very entertaining, strong and durable and which may be manufactured at comparatively low cost.

Still further objects and advantages of the invention will become apparent from a study of the following detailed description taken in connection with the accompanying drawing wherein like characters of reference designate corresponding parts throughout the several views wherein:

Figure 1 is a top plan view of a device embodying the structure of a base board forming a part of my invention.

Figure 2 is a side elevational view of the game board.

Figure 3 is an enlarged fragmentary sectional view taken substantially on the line 3—3 of Fig. 1.

Figure 4 is a perspective view of the projectile, and

Figure 5 is a perspective view of the projector.

Referring now to the drawing in detail, it will be seen that the reference numeral 6 designates a base board, constructed from any suitable material such as ply wood or the like, which has four side edges of equal length. The top side surface of the base board 6 has a playing field 7 thereon which is marked off by circular lines 8, 9 and 10 and radial lines 11, 12, 13 and 14 which divide the areas described by the circles 8, 9 and 10 into quadrants. A line 15 extends from the center of the inner circle 8 to an intermediate point on the line 10 between the lines 11 and 12 and from this junction a line 16 extends in parallelism with the line 12 to provide a starting line for the game. Openings 17—17 are formed through the base board 6 along the lines 12 and 13 at equidistant

points from the lines 11 and 14 for receiving the pegs 21 of the goal 19.

The goal 19 is provided with vertical end posts 20—20 the lower end portion of each of which is square in cross section and terminates in a round reduced portion to provide a peg 21 for engagement in each of the openings 17, while the top end portion of the posts 20—20 is reduced in cross section to provide uprights 23—23.

A barrier 24 is fixed to and between the posts 20—20.

A disk shaped projectile 25 is constructed of any suitable material which is light in weight.

A projector 26 for manipulating the projectile 25 is constructed from suitable thin material which may be flexed slightly and is provided with a handle 27 from which extends a substantially disk shaped head 28.

When the game is played the projectile 25 is placed on the base board 6 at the starting line 16 and is then projected over the goal 19 by the disk head 28 of the projector 26 which is snapped off the edge of the projectile 25 when the disk head 28 is passed over the surface of the projectile 25 under pressure by a player.

Although I have shown and described herein a preferred embodiment of my invention, it is to be definitely understood that I do not desire to limit the application of the invention thereto, and any change or changes may be made in the materials and in the structure and arrangement of the several parts, within the spirit of the invention as claimed.

What is claimed is:

A goal for an apertured game board, said goal including a pair of posts each of which has a reduced bottom end portion engaged in said apertured game board, a barrier having substantially straight parallel top and bottom edges and straight parallel side edges secured to and between said posts above said reduced bottom end portions and contacting said game board at its bottom edge and uprights extending from said posts beyond the top edge of said barrier.

AARNE LAINE. 45